

Intelligent Material Management System

Operation Instructions

Release Date:

2020.05.12

Compiler:

Shuguang Xie

Table of Contents

Intelligent Material Management System.....	1
1. Management Program and Monitoring Program.....	3
1.1 Program Description.....	3
1.2 Usage Method.....	3
2. Account Login.....	4
3. Function Interface.....	5
3.1 Shelving Function.....	6
3.2 Inventory Inquiry Function.....	8
3.3 Humidity - Sensitive Inquiry Function.....	10
3.4 Record Inquiry Function.....	11
3.5 Order Material Issuing Function.....	13
3.6 Exception Handling Function.....	16
3.7 User Management Function.....	17
3.8 Login Record Inquiry Function.....	18
3.9 Material Maintenance Function.....	19
3.10 Disk Splitting Record Function.....	22
3.11 Disk Combining Record Function.....	23
3.12 Supplier Management Function.....	24
3.13 Material Disable Function.....	26

1. Management Program and Monitoring Program

The intelligent material management system consists of two software programs: the intelligent material management program and the intelligent material service monitoring program;

1.1 Program Description

Intelligent Material Management Program: A front-end interactive software for data display, business operations, and shelf management;

Intelligent Material Service Monitoring Program: A back-end service monitoring software for real-time monitoring of shelf location status;

1.2 Usage Method

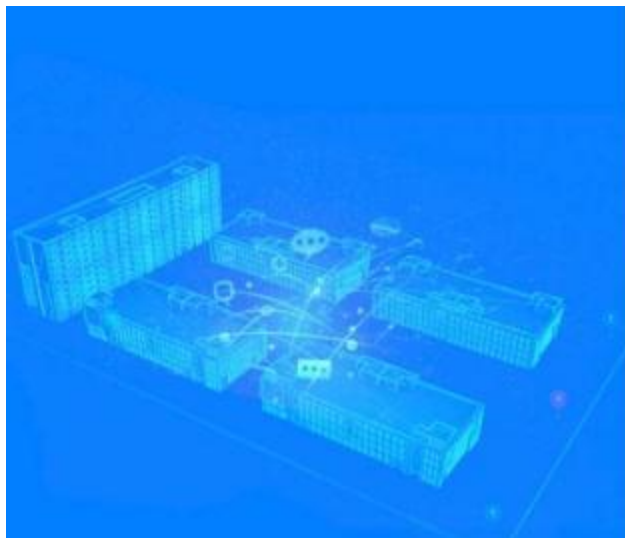
First, double-click to run the "Intelligent Material Service Monitoring Program" to enable rack storage monitoring. After successful operation, click minimize to keep the program running in the background. Double-click the "Intelligent Material Management System" to use the management program.



2.Account Login

Double - click to run the "Intelligent Material Management System", enter the system login interface, enter the account and password, and click login to enter the function interface.

Default: Account: admin; Password: 123456. Different levels of permissions for login accounts can be set for convenient management.



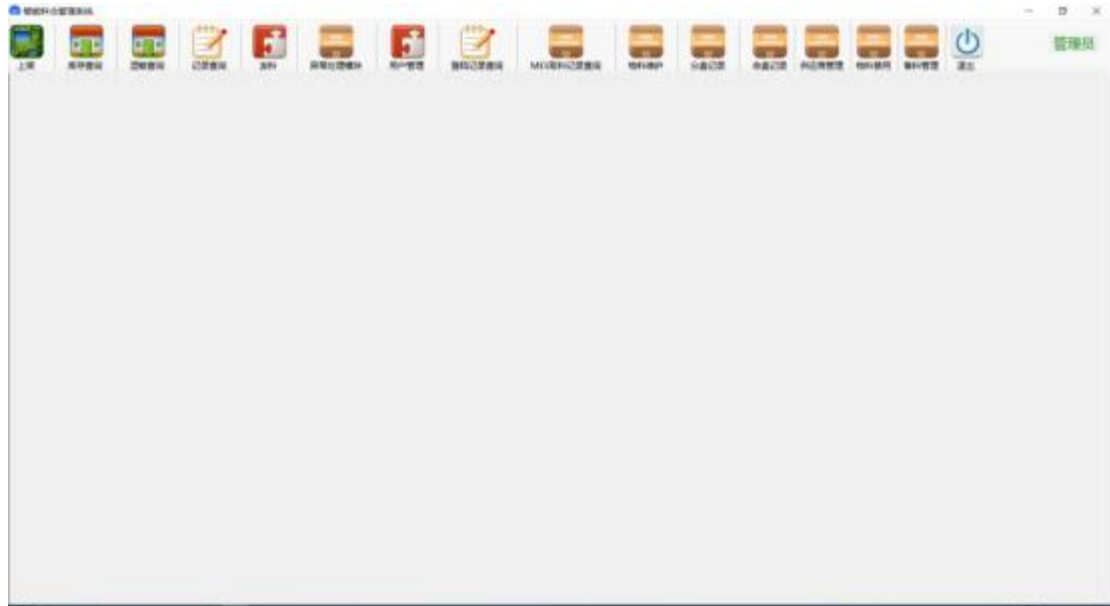
智能物料管理系统

账号

密码

3.Function Interface

After successful login, enter the function interface. Click the business - related software buttons to carry out the business operations of intelligent material management. Click "Exit" to exit the intelligent material management program;

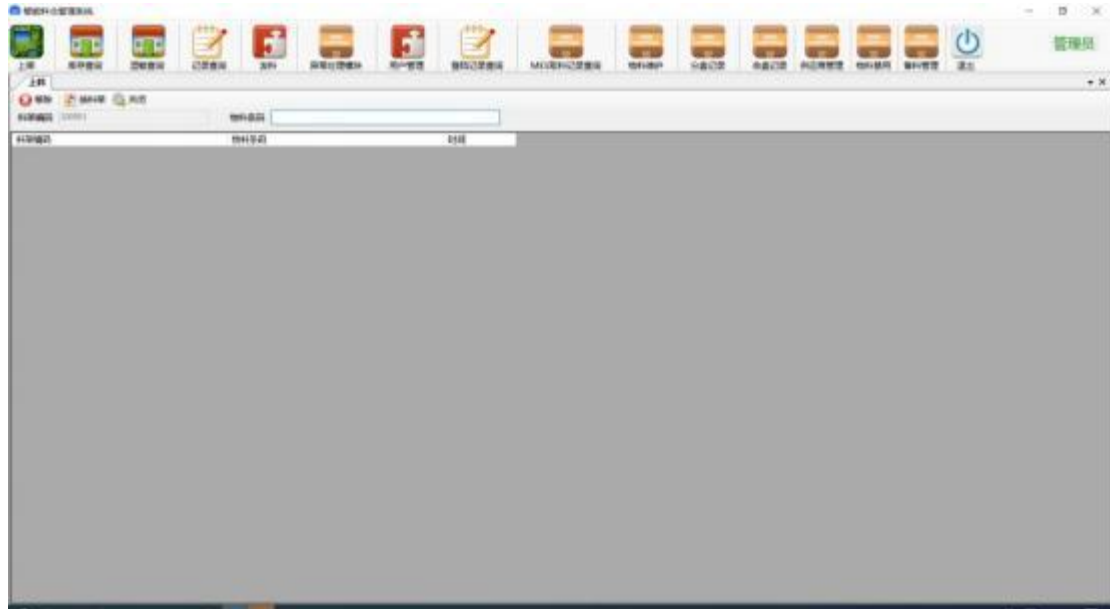


Note: Rack usage is fully visualized. Each intelligent rack is divided into sides A and B, with each side controlled by a three-color light. During normal operation, the three-color light remains green. When there is a material dispensing task, it turns yellow. In case of abnormal errors, it turns red.

Under the same network, multiple intelligent racks can share data. Only one host computer is needed, and multiple computers can operate at the same time to realize operations such as shelving, material picking, inventory inquiry, and exception clearing of materials on multiple computers at the same time.

3.1 Shelving Function

Function Description: This function involves shelving new materials onto the intelligent racks.



3.1.1 Normal Shelving

Use a scanner to scan the "Rack Code" on the intelligent rack, then scan the "Material Code" of the material to be shelved. This will generate a shelving task displayed in the list below. After placing the material on the rack, the service program detects it, and the rack storage location lights up green, indicating the shelving task is successful. The task disappears from the list, the green light turns off, and the next shelving operation can proceed.

3.1.2 Removal Function

After a successful scan generates a shelving task, there is a 10-second window for shelving. If the material is not placed on the rack within this time, an abnormal alarm will trigger upon reattempt, preventing normal shelving. The shelving task must be cleared and rescanned to proceed.

Click "Remove" to cancel the current material shelving.

3.1.3 Rack Switching Function

Click "Switch Rack" to cancel the current rack lock and scan another rack to continue shelving operations.

3.2 Inventory Inquiry Function

Function Description: This function involves querying detailed information about materials shelved on intelligent racks.

Click the "Inventory Query" button to enter the inventory query function interface. You can directly click the "Query" button to query information of all materials in stock. You can view the specific location of the material on the rack, including which level and position number, the shelving time of the material, the total quantity of the material and the individual quantity per tray, the total number of trays, detailed information of the material, material code, batch, whether it is scrap material, production date, whether it is disabled, and other specific information.

The screenshot displays the 'Inventory Query' interface of a software application. The top section contains navigation buttons and a search area with fields for 'Material Location', 'Material Type', and 'Material Name'. Below this is a table listing various materials with columns for material code, name, location, and quantity. The bottom section shows a detailed view of a specific material, including its name, location, quantity, and other attributes.

物料代码	物料名称	规格	物料位置	物料批次	物料数量	物料单位	物料来源	物料日期	物料状态	物料备注
L0001	材料A	1层	1-1	373644#300010000294131#3000#376	3181	30000.000029	373644#	2101	正常	
L0001	材料A	1层	1-2	373644#300010000294131#3000#376	3181	30000.000029	373644#	2101	正常	
L0001	材料A	1层	1-3	448126#31130121642312100#4100#4014	3181	30000.000029	448126#	2011	正常	材料A材料A
L0001	材料A	1层	1-4	373644#300010000294131#3000#376	3181	30000.000029	373644#	2101	正常	
L0001	材料A	1层	1-5	373644#300010000294131#3000#376	3181	30000.000029	373644#	2101	正常	
L0001	材料A	1层	1-6	373644#300010000294131#3000#376	3181	30000.000029	373644#	2101	正常	
L0001	材料A	1层	1-7	373644#300010000294131#3000#376	3181	30000.000029	373644#	2101	正常	
L0001	材料A	1层	1-8	373644#300010000294131#3000#376	3181	30000.000029	373644#	2101	正常	
L0001	材料A	1层	1-9	373644#300010000294131#3000#376	3181	30000.000029	373644#	2101	正常	
L0001	材料A	1层	1-10	373644#300010000294131#3000#376	3181	30000.000029	373644#	2101	正常	
L0001	材料A	1层	1-11	373644#300010000294131#3000#376	3181	30000.000029	373644#	2101	正常	
L0001	材料A	1层	1-12	373644#300010000294131#3000#376	3181	30000.000029	373644#	2101	正常	
L0001	材料A	1层	1-13	373644#300010000294131#3000#376	3181	30000.000029	373644#	2101	正常	
L0001	材料A	1层	1-14	373644#300010000294131#3000#376	3181	30000.000029	373644#	2101	正常	
L0001	材料A	1层	1-15	373644#300010000294131#3000#376	3181	30000.000029	373644#	2101	正常	
L0001	材料A	1层	1-16	373644#300010000294131#3000#376	3181	30000.000029	373644#	2101	正常	
L0001	材料A	1层	1-17	373644#300010000294131#3000#376	3181	30000.000029	373644#	2101	正常	
L0001	材料A	1层	1-18	373644#300010000294131#3000#376	3181	30000.000029	373644#	2101	正常	
L0001	材料A	1层	1-19	373644#300010000294131#3000#376	3181	30000.000029	373644#	2101	正常	
L0001	材料A	1层	1-20	373644#300010000294131#3000#376	3181	30000.000029	373644#	2101	正常	

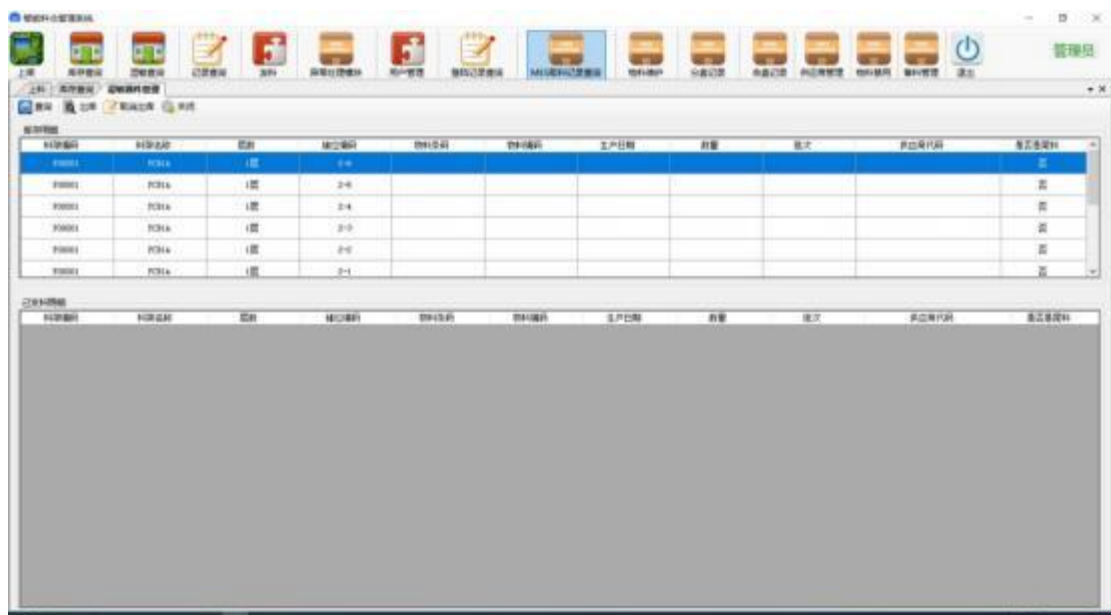
3.2.1 Precise Inquiry

3.3 Humidity-Sensitive Inquiry

3.3.1 Humidity-Sensitive Inquiry

Function Description: This function involves querying and managing details of moisture-sensitive components on intelligent racks.

Click the "Humidity-Sensitive Inquiry" button to enter the humidity-sensitive inquiry function interface. Directly click the "Inquiry" button to query the information of all materials in stock.



3.3.2 Retrieval of Humidity-Sensitive Materials

After querying the desired material, select and click the "Retrieve" button. The corresponding storage location will light up green, and the material can be taken.

3.3.3 Cancel Outbound Task

After selecting the corresponding outbound material information, click the "Cancel Outbound" button. The lit storage location will turn off, canceling the task.

3.3.4 Close

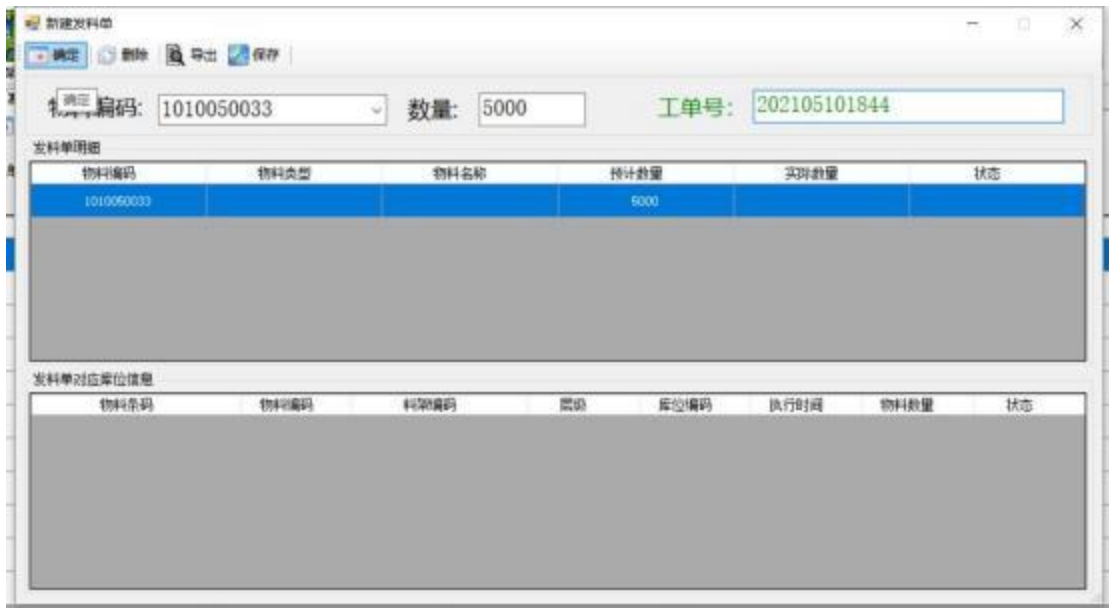
Click the "Close" button to exit the current interface.

3.4.2 Export

Click the "Export" button to save all queried information to any location on the computer.

3.4.3 Close

Click the "Close" button to exit the current interface.



Generate a new work order by selecting and entering the "Material Code", "Material Quantity", and "Work Order Number". Click the "Confirm" button to add materials to the order save area. You can add new materials to the order save area again. Select the material information and click "Delete" to directly delete the information. Click the "Export" button to export all the order information for saving. Click the "Save" button to directly generate new order information.

3.5.3 Order Details

Double-click an order to view its details, status, and specific rack locations of materials.



If the material has been taken out, the status bar shows "Y"; if not taken out, it shows "N". You can find the specific location of the material on the rack from the "Material Issuing Order Corresponding Location Information" area. By default, the "Material Issuing Order Corresponding Location Information" area displays the rack location information corresponding to all materials in the order, and there is a time record when the material is taken down. You can double-click the specific material information in the "Material Issuing Order Details" area for precise searching.

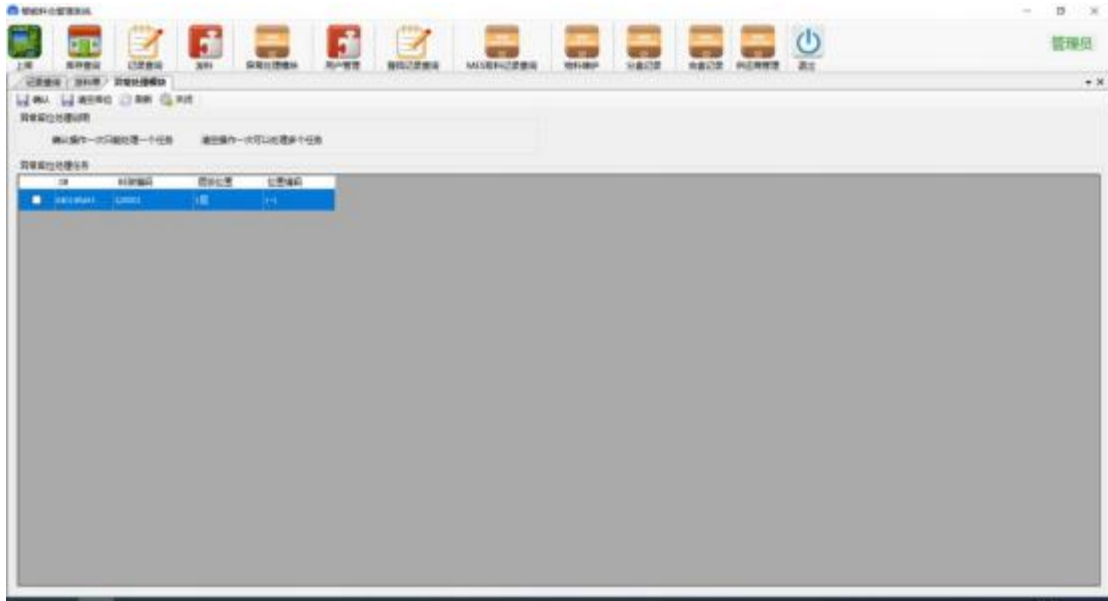
3.5.4 Close

Click the "Close" button to close the current interface.

3.6 Exception Handling Function

Function Description: This function involves clearing exception information on intelligent racks.

Click the "Exception Handling Module" button to enter the exception handling module function interface. Click the "Refresh" button to query all current abnormal information of materials.



3.6.1 Clear Location

Select one or more materials and click "Clear Storage Location" to resolve exceptions. Use "Select All," "Deselect All," or "Invert Selection" to choose materials. Abnormal materials can be re-shelved.

Note: When clearing an exception, the material at the abnormal location must be removed first before performing the "Clear Storage Location" operation. If the material is not removed, the rack's three-color light will turn green as in normal operation, but the small light at that location will remain steadily red until the material is taken out.

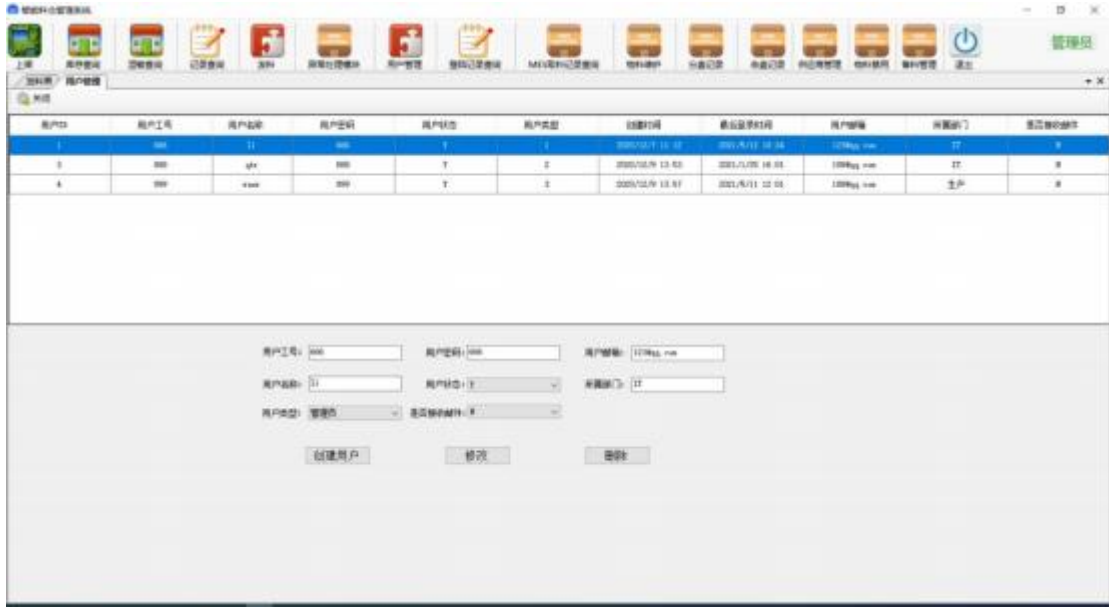
3.6.2 Close

Click the "Close" button to exit the current interface.

3.7 用户管理功能 User Management Function

Function Description: This function involves managing login account permissions.

Click the "User Management" button to enter the user management inquiry function interface and query the detailed information of all current users.



This function is used by managers to manage some permissions of operators, such as adding, modifying, deleting, and viewing detailed information of operators, such as viewing "last login time", "affiliated department", etc., and setting "account", "password", "whether".

3.7.1 Modify User

Select a user to modify, and their details will appear below. Edit the information in the input fields and click "Modify" to save changes.

3.7.2 Create User

Enter the "User ID" and other required information, then click "Create User" to add a new user.

3.7.3 Delete User

Select the user to delete and click the "Delete" button to remove them.

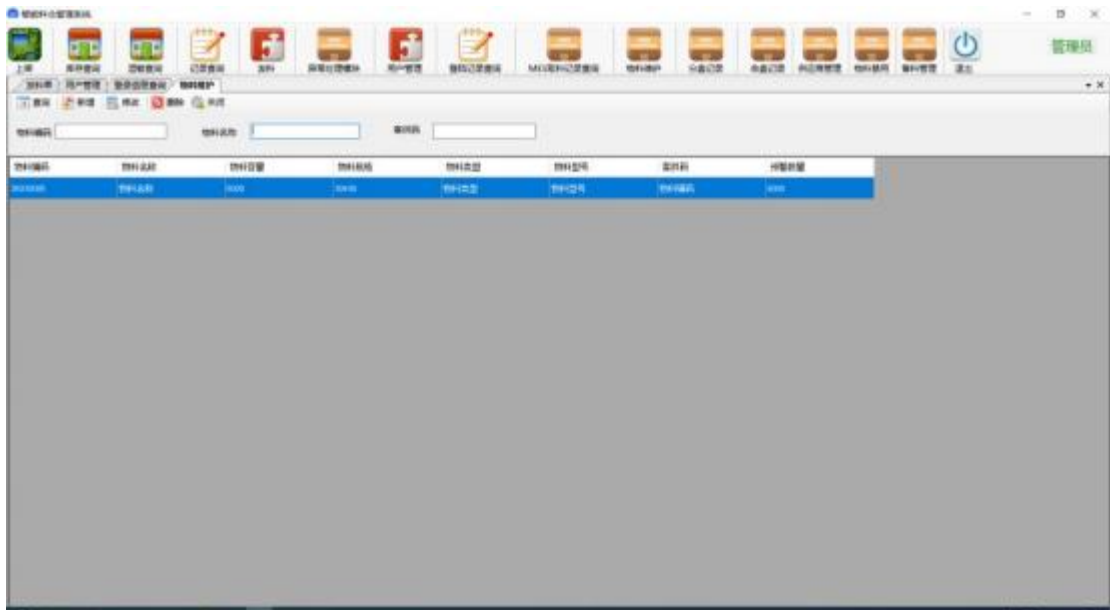
3.7.4 Close

Click the "Close" button to exit the current interface.

3.9 Material Maintenance Function

Function Description: This function involves managing existing and new materials.

Click the "Material Maintenance" button to enter the "Material Maintenance" function interface. Click the "Inquiry" button to query all current material information.



3.9.1 Add Material

Click the "Add" button to enter the material addition interface.

物料新增

物料编码: *必写项

物料名称:

物料规格:

物料数量:

物料类型:

物料型号:

客户代码:

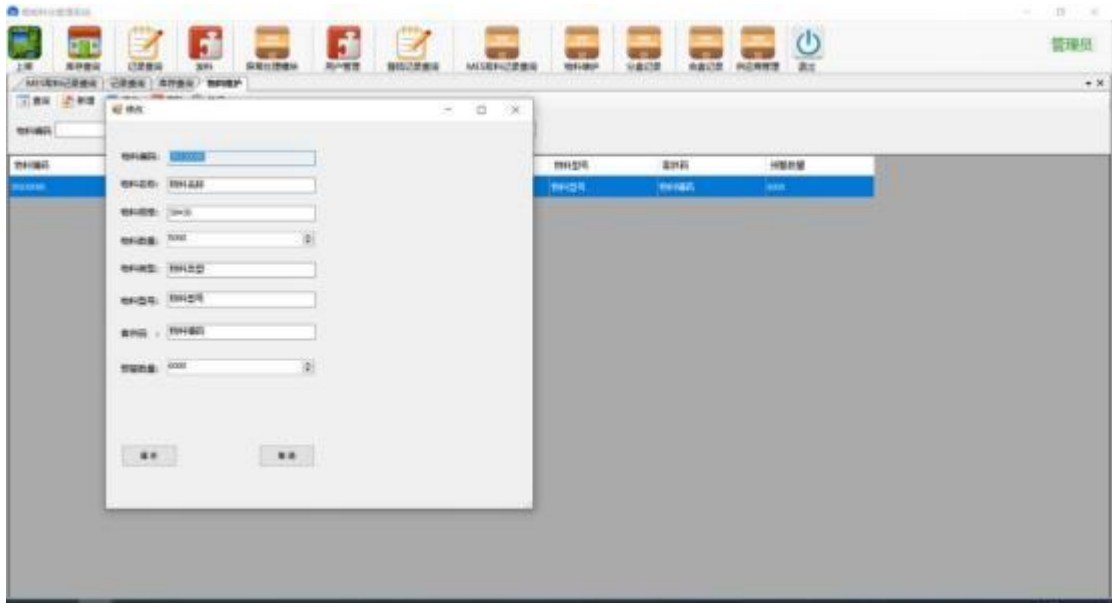
库存数量:

保存 取消

Enter new material information such as "Material Code", "Category Name", "Product Specification", "Product Model", "Customer Provided Code", and "Quantity" as required. Click the "Save" button to complete the addition of new material information. Click the "Cancel" button to return to the previous page.

3.9.2 Modify Material Maintenance Information

Select the material to modify, click the "Modify" button, edit the information in the input fields, and click "Save" to confirm changes. Click "Cancel" to return to the previous page.



3.9.3 Delete Material Maintenance Information

Select the material information to be deleted and click the "Delete" button to delete it successfully.

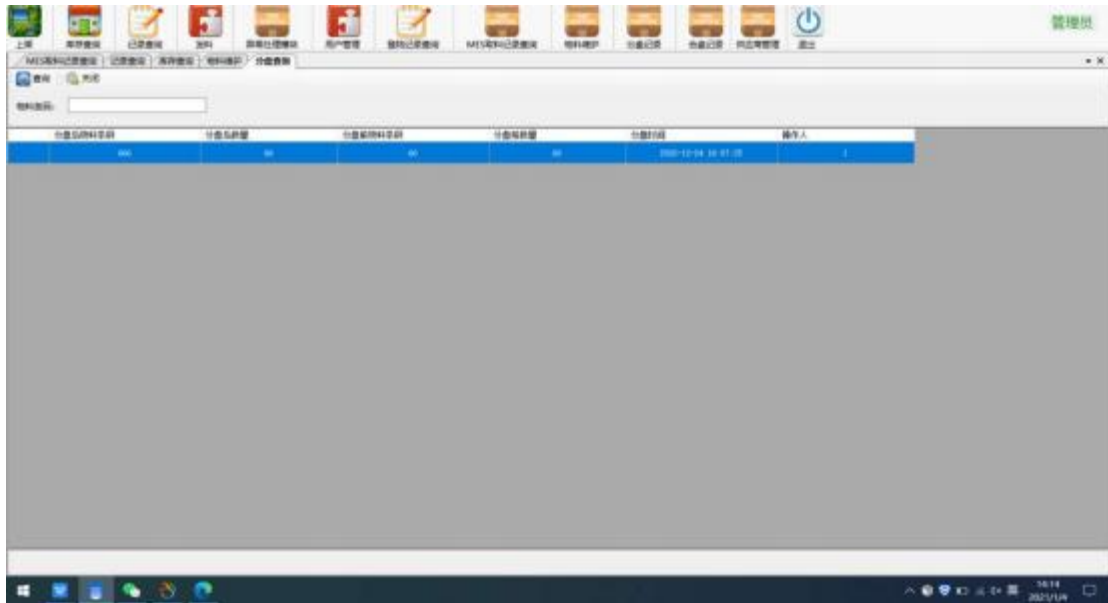
3.9.4 Close

Click the "Close" button to exit the current interface.

3.10 Disk Splitting Record Function

Function Description: This function involves querying records of splitting full trays of materials when supplies are insufficient.

Click the "Splitting Record" button to enter the interface. Click "Query" to retrieve current splitting records. Enter keywords in the "Material Barcode" field to search for specific materials.



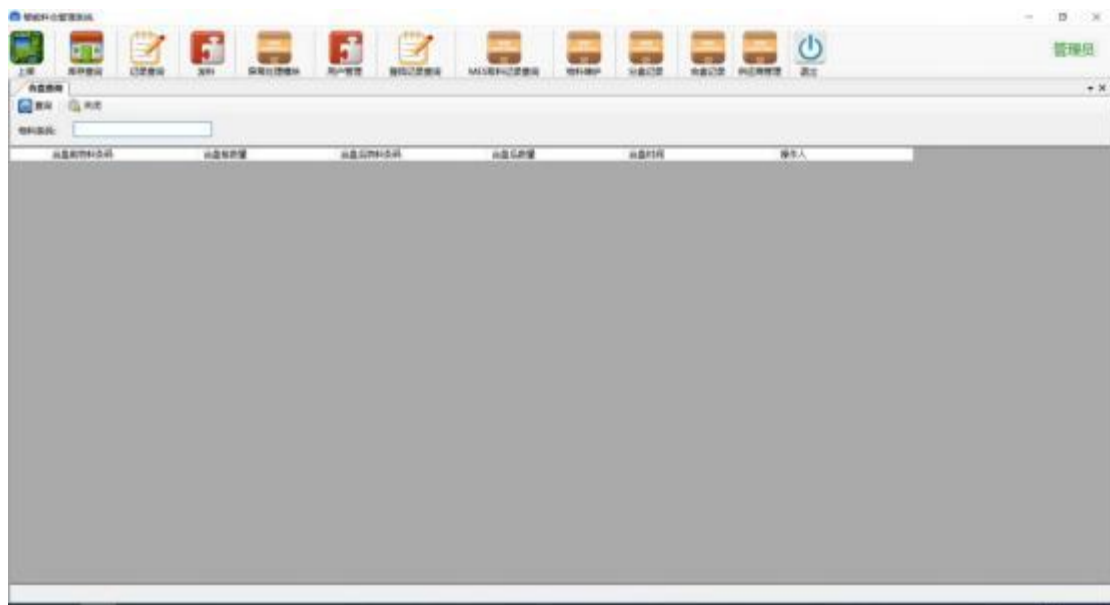
Click the "Close" button to exit the current interface.

Note: The disk splitting function operation is performed by scanning with a PDA and data interaction with the PC terminal. The PC terminal can only perform data queries.

3.11 Disk Combining Record Function

Function Description: This function involves querying records of merging leftover materials.

Click the "Merging Record" button to enter the interface. Click "Query" to retrieve current merging records. Enter keywords in the "Material Barcode" field to search for specific materials.



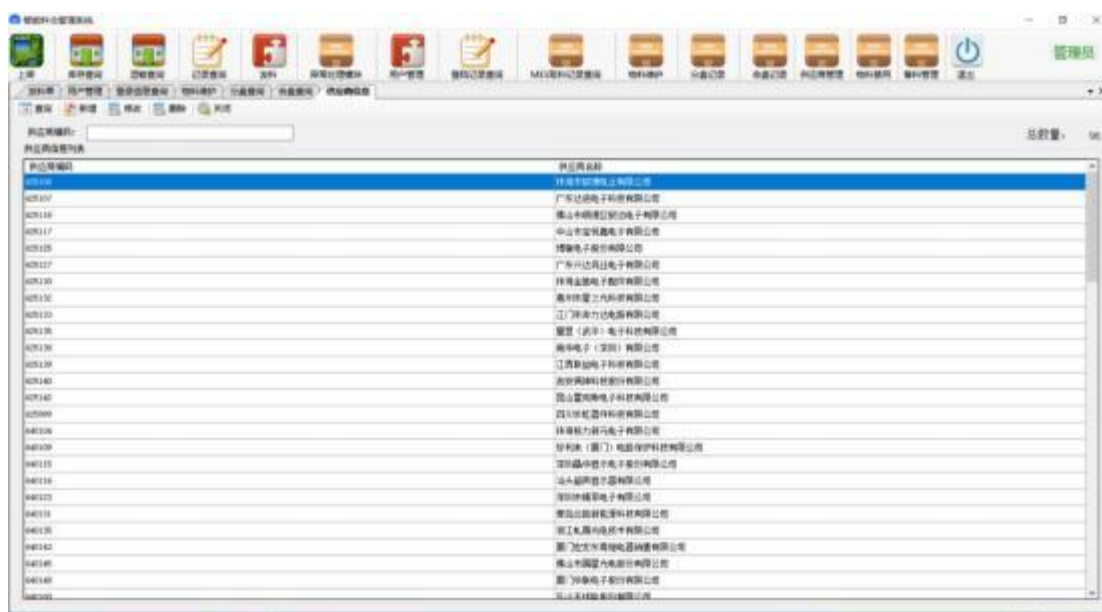
Click the "Close" button to exit the current interface.

Note: The disk combining function operation is performed by scanning with a PDA and data interaction with the PC terminal. The PC terminal can only perform data queries

3.12 Supplier Management Function

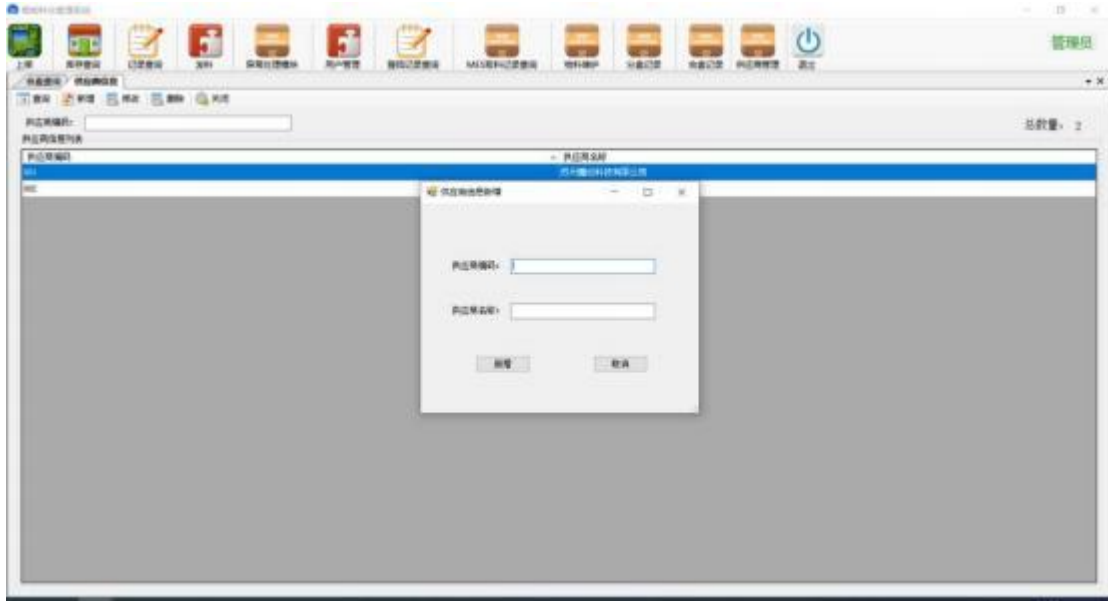
Function Description: This function involves managing supplier information.

Click the "Supplier Management" button to enter the "Supplier Management" function interface. Click the "Inquiry" button to query all current supplier information.



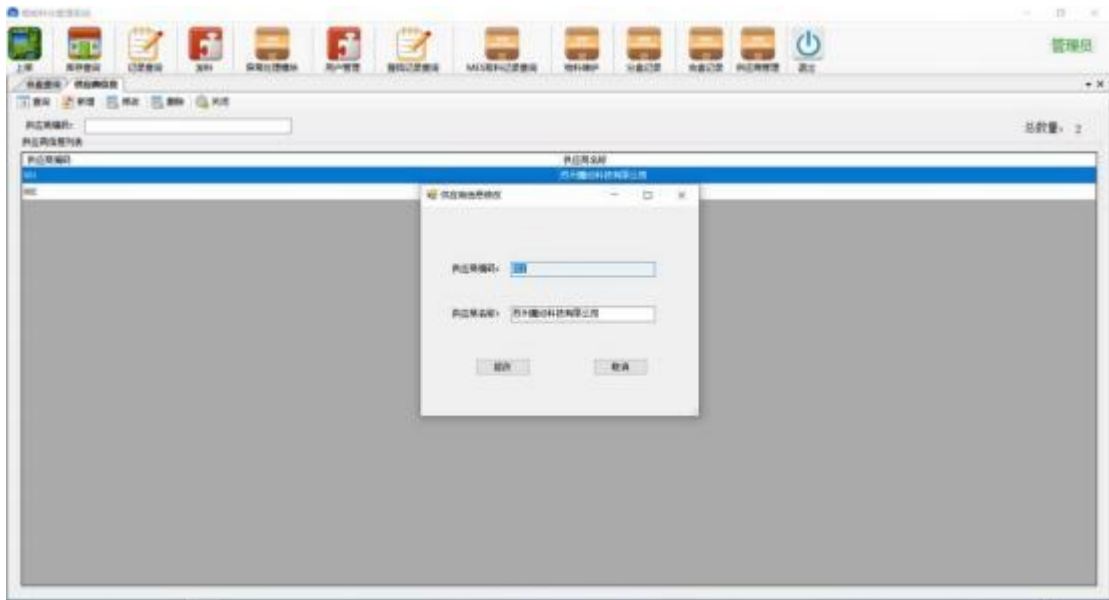
3.12.1 Add Supplier

Click the "Add" button to enter the supplier addition interface. Enter the required information and click "Save" to confirm. Click "Cancel" to return to the previous page.



3.12.2 Modify Supplier Information

Select the supplier to modify, click the "Modify" button, edit the information, and click "Save" to confirm changes. Click "Cancel" to return.



3.12.3 Delete Supplier Information

Select the supplier to delete and click the "Delete" button to remove it.

3.12.4 Close

Click the "Close" button to exit the current interface.

3.13 Material Disabling Function

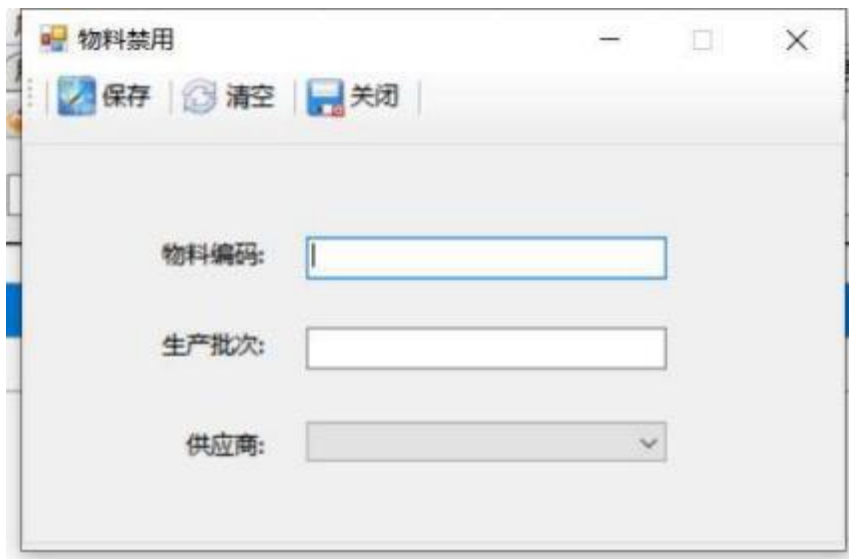
Function Description: This function involves disabling and managing materials.

Click the "Material Disable" button to enter the "Material Disable" function interface.
Click the "Inquiry" button to query all current disabled material information.

物料编号	生产批次	厂内编号	供应来源	操作日期	禁用日期
27474214	8	49114	佛山千禧康乐医药有限公司	2012/5/14 10	2012/5/14 10
27423	27424	48124	佛山千禧康乐医药有限公司	2012/5/14 10	2012/5/14 10

3.13.1 Add Disabled Material

Click the "Add" button to enter the material disabling interface.



The screenshot shows a dialog box titled "物料禁用" (Material Disabling). At the top, there are three buttons: "保存" (Save), "清空" (Clear), and "关闭" (Close). Below these buttons, there are three input fields: "物料编码:" (Material Code) with a text box, "生产批次:" (Production Batch) with a text box, and "供应商:" (Supplier) with a dropdown menu.

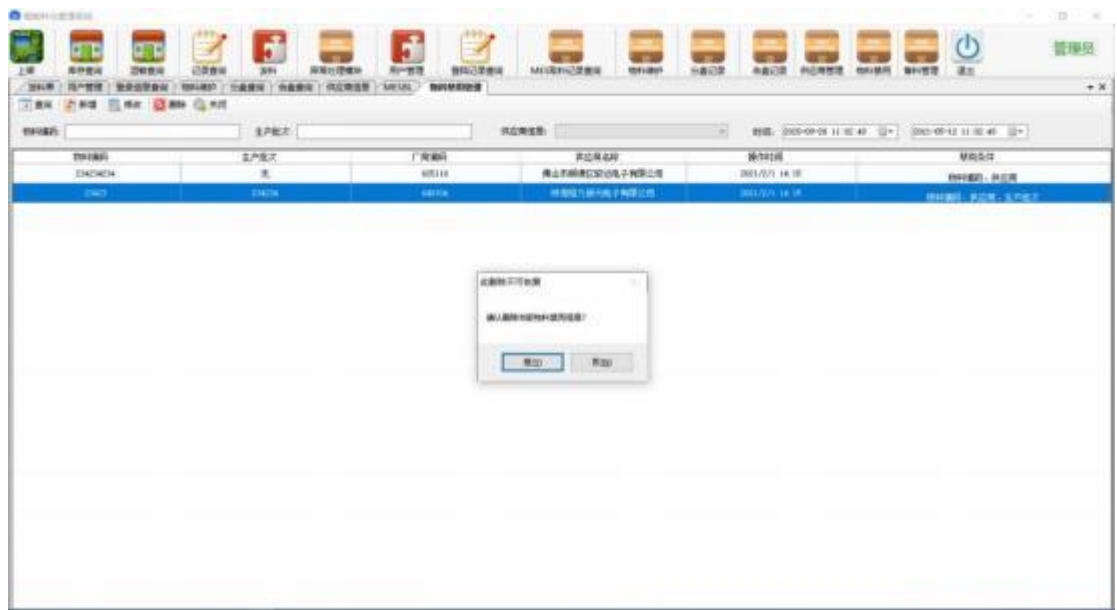
Enter information such as "Material Code", "Production Batch", and "Supplier" as required, and click the "Save" button to complete the addition. Click the "Clear" button to clear redundant or incorrect input information. Click the "Close" button to return to the previous page.

3.13.2 Modify Disabled Material Information

Select the material to modify, click the "Modify" button, edit the information, and click "Save" to confirm changes. Click "Clear" to reset input fields or "Close" to return to the previous page.



3.13.3 Delete Disabled Material Information



Select the disabled material to delete and click the "Delete" button to remove it.

3.13.4 Close

Click the "Close" button to exit the current interface.

